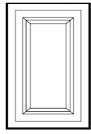
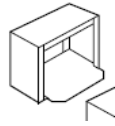


**Cabinet Components**



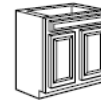
End Panel



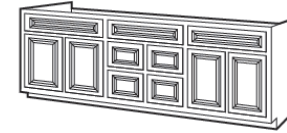
Microwave Oven Shelf Box  
Opening 27"W x 14 1/2"H  
excluding shelf.



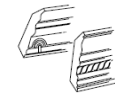
Wall End Shelf



Base Cabinet Double Door w/  
Single Drawer  
34 1/2" High



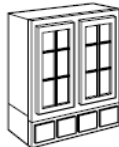
Vanities - 4 Doors with  
4 Center Drawers-34"H



CM96A  
5/8"wx3"hx96"l plain  
CM96C  
5/8"wx4"hx96"l rope  
CM120A  
5/8"wx3"hx120"l plain  
CM120C  
5/8"wx4"hx120"l rope  
Crown Molding



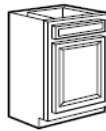
Single Door Wall Cabinet  
R or L hinge determined during assembly  
or square box may be flipped  
by reversing shelf clips.



Double Glass Doors w/ Drawers



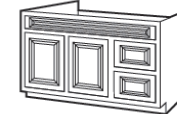
Wine Glass Holder



Base Cabinet - Single Door  
- 34 1/2" High



Base Corner



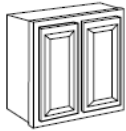
Vanities - 2 Doors w Drawers- 34" Height



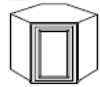
Decorative End Panels - 3" Trim  
& Finished Back Panels



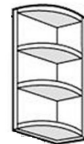
Valance  
1 1/2"h x 35"L or 1 1/2"hx48"L



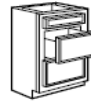
Double Door Wall Cabinet



Diagnol Corner



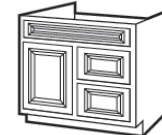
Base End Shelf



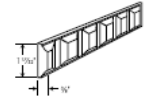
Drawer Base Cabinet  
- 34 1/2" High



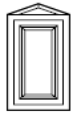
Diagnol Corner Frame w/ Kicker  
1 Door with Bottom Panel  
(false drawer front)



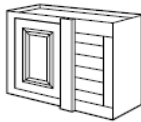
Vanities - 1 Door with Drawers - 34" Height



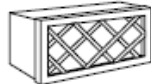
Dentil Edge Molding  
1/2w x 3/4"h x 48"L



End Angle Wall Corner



Wall Cabinet Blind Corner  
hinging (L or R) determined at assembly



Wine Rack



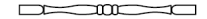
Blind Base Corner  
42" minimum coverage to 45"  
6" center board (full overlay w/ 4 3/4"...  
16" wide door over 13 3/8" opening



Vanity Drawer Pack  
3 Drawers - 34" Height



Linen Cabinet - 3 Doors



Base Spindle  
3"W x 3"L x 34 1/2" L



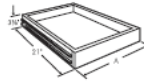
Corner Appliance Garage



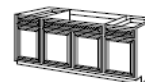
Single/Double Wide Pantry



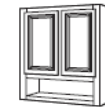
Oven Hood



Roll Out Trays  
including hardware



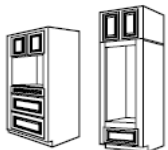
Sink Bases with Drawers  
all base cabinets include finished  
toe kick. May be used for a drop-in range.  
Has two false drawer fronts & doors.



Overjohn



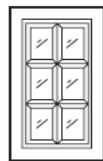
Desk Drawer



Double/Single Oven Cabinet



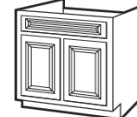
Plate Holder



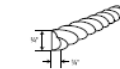
Wall Cabinet Glass Door



End Angle Cabinet



Double Doors- 34 1/2" High



Rope Molding  
3/8" T x 3/4" H x 96" L



Outside Corner Molding  
3/4" W x 1/4" H x 96" L



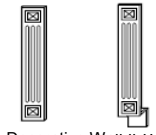
Scribe Molding



Batten Molding



Under Cabinet Trim  
1" W x 1 1/2" x 96" L



Decorative Wall & Base  
Filler Strips



Basic Wall & Base Filler Strips



401 E. Douglas Rd. Suite 2  
Oldsmar, FL 34677  
(813) 818-9700

## Fine Kitchen & Bath Cabinetry

Granite & Marble Countertops and More

WALL:	TAW	IMC	IMG	CS	FPS	IHF	DO
W0930 L/R	\$90	\$90	\$90	\$87	\$72	\$83	\$66
W1230 L/R	\$102	\$102	\$102	\$99	\$84	\$95	\$74
W1530 L/R	\$115	\$115	\$115	\$112	\$112	\$106	\$87
W1830 L/R	\$130	\$130	\$130	\$127	\$112	\$120	\$99
W2130 L/R	\$148	\$148	\$148	\$145	\$130	\$136	\$108
W2430	\$161	\$161	\$161	\$158	\$158	\$148	\$119
W2730	\$178	\$178	\$178	\$175	\$160	\$162	\$132
W3030	\$185	\$185	\$185	\$178	\$163	\$171	\$143
W3330	\$195	\$195	\$195	\$192	\$177	\$179	\$132
W3630	\$207	\$207	\$207	\$204	\$189	\$189	\$154
W4230	\$220	\$220	\$220	\$217	\$202	\$203	\$172
W4830	--	--	\$266	\$242	\$227	\$252	--
W0936 L/R	\$104	\$104	\$104	\$101	\$86	\$97	--
W1236 L/R	\$122	\$122	\$122	\$119	\$104	\$112	--
W1536 L/R	\$137	\$137	\$137	\$134	\$119	\$127	--
W1836 L/R	\$157	\$157	\$157	\$154	\$139	\$144	--
W2136 L/R	\$178	\$178	\$178	\$175	\$160	\$164	--
W2436	\$193	\$193	\$193	\$190	\$175	\$178	--
W2736	\$214	\$214	\$214	\$211	\$196	\$196	--
W3036	\$223	\$223	\$223	\$220	\$205	\$206	--
W3336	\$231	\$231	\$231	\$228	\$213	\$213	--
W3636	\$249	\$249	\$249	\$246	\$246	\$228	--
W4236	--	--	\$252	\$249	\$249	\$245	--
W0942 L/R	\$123	\$123	\$123	\$120	\$120	\$113	\$87
W1242 L/R	\$141	\$141	\$141	\$138	\$123	\$130	\$98
W1542 L/R	\$173	\$173	\$173	\$170	\$155	\$162	\$130
W1842 L/R	\$182	\$182	\$182	\$180	\$165	\$168	\$132
W2142 L/R	\$207	\$207	\$207	\$204	\$189	\$190	\$146
W2442	\$225	\$225	\$225	\$222	\$207	\$207	\$160
W2742	\$249	\$249	\$249	\$246	\$231	\$230	\$178
W3042	\$260	\$260	\$260	\$257	\$242	\$241	\$185
W3342	\$267	\$267	\$267	\$264	\$249	\$245	\$197
W3642	\$291	\$291	\$291	\$288	\$273	\$267	\$209
W4242	--	--	\$293	\$290	\$275	\$277	--

WALL END:	TAW	IMC	IMG	CS	FPS	IHF	DO
AW30	\$139	\$139	\$139	\$136	\$121	\$127	\$129
AW36	\$164	\$164	\$164	\$161	\$146	\$150	--
AW42	\$188	\$188	\$188	\$185	\$170	\$172	\$175

WALL BRIDGES:	TAW	IMC	IMG	CS	FPS	IHF	DO
W2415	\$106	\$106	\$106	\$103	\$88	\$99	\$81
W2418	\$116	\$116	\$116	\$113	\$98	\$108	\$90
W3012	\$110	\$110	\$110	\$107	\$92	\$99	\$81
W3015	\$119	\$119	\$119	\$116	\$101	\$111	\$88
W3018	\$130	\$130	\$130	\$127	\$112	\$120	\$95
W3021	--	--	--	--	--	--	\$102
W3024	\$158	\$158	\$158	\$155	\$140	\$146	\$118
W3312	--	--	\$111	\$108	\$93	--	--
W3027	\$172	\$172	\$172	\$169	--	\$133	--
W3315	\$129	\$129	\$129	\$126	\$126	\$119	\$94
W3318	\$134	\$134	\$134	\$131	\$116	\$123	\$112
W3612	\$120	\$120	\$120	\$117	\$102	\$111	\$88
W3615	\$132	\$132	\$132	\$128	\$113	\$127	\$97
W3618	\$155	\$155	\$155	\$152	\$128	\$143	\$106
W3621	--	--	--	--	--	--	\$118
W3624	\$155	\$155	\$155	\$152	\$127	\$143	\$136
W3912	\$127	\$127	\$127	\$124	\$109	\$120	\$95
W3915	\$146	\$146	\$146	\$143	\$128	\$134	\$113

WALL CORNER:	TAW	IMC	IMG	CS	FPS	IHF	DO
WBC2730 L/R	\$178	\$178	\$178	\$175	\$160	\$162	\$125
WBC2736 L/R	\$210	\$210	\$210	\$197	\$182	\$193	--
WBC2742 L/R	\$249	\$249	\$249	\$246	\$231	\$230	\$168
WBC2430 L/R	\$223	\$223	\$223	\$220	\$205	\$204	\$153
WBC2436 L/R	\$270	\$270	\$270	\$272	\$252	\$248	--
WBC2442 L/R	\$316	\$316	\$316	\$313	\$298	\$290	\$207

WALL PANTRY:	TAW	IMC	IMG	CS	FPS	IHF	DO
WP1884 L/R	\$432	\$432	\$432	\$429	\$414	\$389	\$282
WP1890 L/R	\$469	\$469	\$469	\$466	\$451	\$430	\$322
WP1896 L/R	\$484	\$484	\$484	\$481	\$466	\$444	--
WP2484	\$536	\$536	\$536	\$534	\$519	\$491	\$353
WP2490	\$629	\$629	\$629	\$626	\$611	\$575	--
WP2496	\$651	\$651	\$651	\$648	\$628	\$595	\$402

OVEN & MICROWAVE CABINETS:	TAW	IMC	IMG	CS	FPS	IHF	DO
OC3384	\$748	\$748	\$748	\$745	\$730	\$630	\$550
OC3390	\$785	\$785	\$785	\$782	\$782	\$680	--
OC3396	\$806	\$806	\$806	\$803	\$788	\$715	\$626
P3384OCD	\$839	\$839	\$839	\$836	\$821	\$743	\$645
P3390OCD	\$914	\$914	\$914	\$910	\$896	\$775	--
P3396OCD	\$967	\$967	\$967	\$964	\$945	\$851	\$818
MW303218PM	\$162	\$162	\$162	\$160	\$144	\$158	\$101

GLASS DOORS:	TAW	IMC	IMG	CS	FPS	IHF	DO
W1230GD L/R	\$66	\$66	\$66	\$63	\$77	\$60	--
W1236GD L/R	\$76	\$76	\$76	\$73	\$90	\$69	--
W1242GD L/R	\$87	\$87	\$87	\$83	\$102	\$77	--
W1530GD L/R	\$80	\$80	\$80	\$76	\$87	\$71	\$85
W1536GD L/R	\$91	\$91	\$91	\$88	\$102	\$83	--
W1542GD L/R	\$104	\$104	\$104	\$101	\$116	\$94	\$98
W1830GD L/R	\$98	\$98	\$98	\$95	\$105	\$88	\$104
W1836GD L/R	\$115	\$115	\$115	\$112	\$123	\$102	--
W1842GD L/R	--	--	--	--	\$141	\$118	--
W1842GD	\$130	\$130	\$130	\$127	--	\$111	\$125
W2136GD L/R	--	--	--	\$116	--	--	--
W2430GD	\$123	\$123	\$123	\$120	\$139	\$111	\$125
W2436GD	\$146	\$146	\$146	\$148	\$162	\$130	--
W2442GD	\$167	\$167	\$167	\$164	\$188	\$148	\$167
W2736GD L/R	--	--	--	\$133	--	--	--
W3030GD	\$146	\$146	\$146	\$143	\$164	\$141	\$144
W3036GD	\$168	\$168	\$168	\$165	\$193	\$161	--
W3042GD	\$193	\$193	\$193	\$190	\$223	\$171	\$196
W3630GD	\$181	\$181	\$181	\$178	\$169	\$175	--
W3636GD	\$195	\$195	\$195	\$192	\$220	\$225	--
W3642GD	\$246	\$246	\$246	\$243	\$155	\$225	--
WDC2430GD	--	--	--	--	\$83	--	\$70
WDC2436CG	--	--	--	--	\$97	--	--
WDC2442GD	--	--	--	--	\$104	--	\$91

PLATE RACKS:	TAW	IMC	IMG	CS	FPS	IHF	DO
W3015PL	\$200	\$200	\$200	\$197	\$185	\$167	--
W3815PL	\$234	\$234	\$234	\$231	\$196	\$189	--

SINK BASE:	TAW	IMC	IMG	CS	FPS	IHF	DO
SB30	\$242	\$242	\$242	\$239	\$139	\$221	\$147
SB33	\$248	\$248	\$248	\$245	\$148	\$228	\$162
SB36	\$248	\$248	\$248	\$250	\$161	\$232	\$175
SB42	\$270	\$270	\$270	\$267	\$178	\$248	\$190
SB60	\$339	\$339	\$339	\$336	\$249	\$311	\$269

VANITIES:	TAW	IMC	IMG	CS	FPS	IHF	DO
2421-30	--	--	--	--	--	--	\$118
2421D-30	--	--	--	--	--	--	\$143
3021-30	--	--	--	--	--	--	\$140
3021D-30	--	--	--	--	--	--	\$157
3621-30	--	--	--	--	--	--	\$172
3621D-30	--	--	--	--	--	--	\$193
4221D-30	--	--	--	--	--	--	\$223
4821D-30	--	--	--	--	--	--	\$263
6021D-30	--	--	--	--	--	--	\$309
7221D-30	--	--	--	--	--	--	\$392
2421-34	\$195	\$195	\$195	\$192	\$118	\$173	--
2421D-34	\$246	\$246	\$246	\$243	\$143	\$225	--
3021-34	\$231	\$231	\$231	\$228	\$140	\$210	--
3021D-34	\$279	\$279	\$279	\$276	\$164	\$255	--
3621-34	\$283	\$283	\$283	\$285	\$173	\$258	--
3621D-34	\$309	\$309	\$309	\$306	\$325	\$281	--
4221D-34	\$247	\$247	\$247	\$244	\$195	\$316	--
4821D-34	\$388	\$388	\$388	\$385	\$235	\$351	--
6021D-34	\$490	\$490	\$490	\$487	\$265	\$362	--
7221D-34	\$545	\$545	\$545	\$542	\$325	\$496	--
VBF334	\$31	\$31	\$31	\$28	--	\$31	--

VANITY DRAWER BASES & VANITY DRAWERS:	TAW	IMC	IMG	CS	FPS	IHF	DO
VD123-21-30	--	--	--	--	\$111	--	\$186
VD153-21-30	--	--	--	--	\$125	--	\$211
VD183-21-30	--	--	--	--	\$150	--	\$228
VD123-21-34	\$211	\$211	\$211	\$203	\$223	\$192	--
VD153-21-34	\$230	\$230	\$230	\$228	\$152	\$210	--
VD183-21-34	\$249	\$249	\$249	\$246	\$169	\$227	--
VD213-21-34	\$263	\$263	\$263	\$260	\$206	\$241	--
VDU3021	\$91	\$91	\$91	\$88	\$69	\$83	--

LINEN CABINET & OVERJOHN:	TAW	IMC	IMG	CS	FPS	IHF	DO
WLC2184-21	\$542	\$542	\$542	\$539	\$410	\$493	\$312
OJ2130	\$141	\$141	\$141	\$138	\$85	\$141	\$69

BASE CABINETS:	TAW	IMC	IMG	CS	FPS	IHF	DO
B09	\$133	\$133	\$133	\$130	\$78	\$122	\$84
B12	\$139	\$139	\$139	\$136	\$87	\$129	\$92
B15	\$154	\$154	\$154	\$151	\$105	\$141	\$109
B18	\$161	\$161	\$161	\$158	\$115	\$148	\$123
B21	\$186	\$186	\$186	\$183	\$132	\$171	\$141
B24	\$203	\$203	\$203	\$200	\$140	\$188	\$151
B27	\$225	\$225	\$225	\$222	\$155	\$207	\$168
B30	\$245	\$245	\$245	\$242	\$162	\$228	\$175
B33	\$256	\$256	\$256	\$253	\$167	\$237	\$181
B36	\$262	\$262	\$262	\$260	\$176	\$245	\$190
B42	\$312	\$312	\$312	\$309	\$203	\$287	\$218

WINE RACKS:	TAW	IMC	IMG	CS	FPS	IHF	DO
W3015WR	\$189	\$189	\$189	\$186	\$144	\$164	\$119
W3018WR	--	--	--	\$195	--	--	--
W3615WR	\$209	\$209	\$209	\$206	\$202	\$185	\$165
W3618WR	--	--	--	\$199	--	--	--

GLASS HOLDERS:	TAW	IMC	IMG	CS	FPS	IHF	DO
WR30GH	\$63	\$63	\$63	\$60	\$63	\$55	\$56
WR36GH	\$69	\$69	\$69	\$66	\$84	\$66	\$76



Granite & Marble Countertops and More

*Kasco Stone LLC*  
 401 E. DeSoyles Rd. Ste 2, Oldsmar, FL 34677  
 PH: (813) 818-9700 FAX: (813) 818-9701 www.KascoStone.com

*Cabinetry Order Form*

Customer Name: \_\_\_\_\_

Address: \_\_\_\_\_

City, St, Zip: \_\_\_\_\_

Phone: \_\_\_\_\_

Cabinet Style: \_\_\_\_\_

Signature: \_\_\_\_\_

<b>Sub Total of Columns 1 - 6:</b>	
<b>Tax:</b>	
<b>Sub Total:</b>	
<b>Total Shipping on Columns 1 - 6:</b>	
<b>Other Charges:</b>	
<b>Grand Total:</b>	
<b>Deposit Recv'd:</b>	
<b>Amount Due on Delivery:</b>	

WALL:	Cost	Qty	SubTotal
W0930 L/R			
W1230 L/R			
W1530 L/R			
W1830 L/R			
W2130 L/R			
W2430			
W2730			
W3030			
W3330			
W3630			
W4230			
W4830			
W0936 L/R			
W1236 L/R			
W1536 L/R			
W1836 L/R			
W2136 L/R			
W3636			
W4236			
W0942 L/R			
W1242 L/R			
W1542 L/R			
W1842 L/R			
W2142 L/R			
W2442			
W2742			
W3042			
W3342			
W3642			
W4242			
<b>CABINETS With GD 6" DRAWERS:</b>			
W3042GD4			
W3630GD6			
W3636GD6			
W3642GD6			
<b>END DOOR PANELS:</b>			
EPB24D			
EPW1230D			
EPW1236D			
EPW1242D			
<b>Col 1 Cabinet Sub Total:</b>			
<b>Assembly</b>			
<b>Installation</b>			
<b>Total Ship Column 1:</b>			

VANITIES:	Cost	Qty	SubTotal
2421-30			
2421D-30			
3021-30			
3021D-30			
3621-30			
3621D-30			
4221D-30			
4821D-30			
6021D-30			
7221D-30			
2421-34			
2421D-34			
3021-34			
3021D-34			
3621-34			
3621D-34			
4221D-34			
<b>VANITY DRAWER BASES &amp; VANITY DRAWERS:</b>			
VD123-21-30			
VD153-21-30			
VD183-21-30			
VD123-21-34			
VD153-21-34			
VD183-21-34			
VD213-21-34			
VDU3021			
<b>OVEN &amp; MICROWAVE CABINETS:</b>			
OC3384			
OC3390			
OC3396			
P3384OCD			
P3390OCD			
P93396OCD			
MWO301218PM			
<b>CORNER BASE:</b>			
AB24			
BBC3636 L/R			
BBC3639 L/R			
LS3612			
<b>Col 2 Cabinet Sub Total:</b>			
<b>Assembly</b>			
<b>Installation</b>			
<b>Total Ship Column 2:</b>			

WALL BRIDGES:	Cost	Qty	SubTotal
W2415			
W2418			
W3012			
W3015			
W3018			
W3021			
W3024			
W3312			
W3027			
W3315			
W3318			
W3612			
W3615			
W3618			
W3621			
W3624			
W3912			
W3915			
W391224			
W391524			
W391824			
W391824			
W3621			
W3624			
W3912			
W3915			
W361224			
W361524			
W361824			
W362424			
W391224			
W391524			
W391824			
W391824			
<b>WALL END:</b>			
AW30			
AW36			
AW42			
<b>PLATE RACKS:</b>			
W3015PL			
W3615PL			
<b>Col 3 Cabinet Sub Total:</b>			
<b>Assembly</b>			
<b>Installation</b>			
<b>Total Ship Column 3:</b>			

<b>DRAWER BASE:</b>				<b>GLASS DOORS Cont'd</b>			
	Cost	Qty	SubTotal		Cost	Qty	SubTotal
DB12(3)				W3030GD			
DB15(3)				W3036GD			
DB18(3)				W3042GD			
DB21(3)				W3630GD			
DB24(3)				W3636GD			
DB27(3)				W3642GD			
DB30(3)				WDC2430GD			
DB36(3)				WDC2436CG			
<b>ACCESSORIES:</b>				WDC2442GD			
DWR33412 -(3)				<b>SINK BASE:</b>			
FBP489612(2)				SB30			
FBP96341214(1)V				SB33			
REP2496(3)				SB36			
WH30				SB42			
WH36				SB60			
TAG1224				<b>BASE CABINETS:</b>			
<b>LINEN CABINET &amp; OVERJOHN:</b>				B09			
VLC2184-21				B12			
OJ2130				B15			
<b>WINE RACKS:</b>				B18			
W3015WR				B21			
W3018WR				B24			
W3615WR				B27			
W3618WR				B30			
WR30GH				B33			
WR36GH				B36			
<b>WALL CORNER:</b>				B42			
WBC2730 L/R				W2430GD			
WBC2736 L/R				W2436GD			
WBC2742 L/R				W2442GD			
WBC2430 L/R				W2736GD L/R			
WBC2436 L/R				W3030GD			
WBC2442 L/R				W3036GD			
WDC273015 L/R				W3042GD			
WDC273615 L/R				W3630GD			
WDC274215 L/R				W3636GD			
<b>WALL PANTRY:</b>				W3642GD			
WP1884 L/R				WDC2430GD			
WP1890 L/R				WDC2436CG			
WP1896 L/R				WDC2442GD			
WP2484				<b>TRIM:</b>			
WP2490				BF3-SOLID			
WP2496				BF6-SOLID			
<b>GLASS DOORS:</b>				WF3-SOLID			
W1230GD L/R				WF336-SOLID			
W1236GD L/R				WF342-SOLID			
W1242GD L/R				WF396-SOLID			
W1530GD L/R				WF6-SOLID			
W1536GD L/R				WF636-SOLID			
W1542GD L/R				WF642-SOLID			
W1830GD L/R				WF696-SOLID			
W1836GD L/R				CM96A			
W1842GD L/R				CM96C-4			
W1842GD				CM120A			
W2136GD L/R				CM120C-4			
W2430GD				BM3-1/2-5/8-SOLID			
W2436GD				LRM8			
W2442GD				SC1-3			
W2736GD L/R				SC2			
<b>Col 4 Cabinet Sub Total:</b>				<b>Col 5 Cabinet Sub Total:</b>			
<b>Assembly</b>				<b>Assembly</b>			
<b>Installation</b>				<b>Installation</b>			
<b>Total Shipping Column 4:</b>				<b>Total Ship Column 1:</b>			

<b>TRIM Cont'd:</b>			
	Cost	Qty	SubTotal
SC5			
SC9			
TK8			
VAS36-SOLID			
VAS48-SOLID			
RM8			
DM4			
DAM4			
A12WF			
A15WF			
A18WF			
A24WF			
A30WF			
A36WF			
A42WF			
A38F			
A6BF			
TP3			
<b>ROLL OUT TRAYS:</b>			
15RT			
18RT			
21RT			
24RT			
27RT			
30RT			
33RT			
36RT			
<b>END SHELVES:</b>			
WES530RR L/R			
WES536RR L/R			
WES542RR L/R			
BES1224P-TK			
<b>Col 6 Cabinet Sub Total:</b>			
<b>Shipping</b>			
<b>Addl Ship</b>			
<b>Total Ship Column 6:</b>			

